

PERSONAL NAVIGATOR

TUESDAY, SEPTEMBER 4, 2012



Sunrise: 6:53 Sunset: 7:25
 Evening Attire: Cruise Casual/Pirate
 All Ashore: Approx. 8:30 a.m.
 All Aboard: 5:00 p.m.
 Gangway: Deck 1, Midship, & Deck 1, Aft
 Tuesday: Partly Sunny High: 79°F/26°C
 Wednesday: Partly Sunny High: 81°F/27°C

DISNEY'S CASTAWAY CAY

THE PHYSICAL COMEDY OF
Max Wintrey
WALT DISNEY THEATRE
 Decks 3 & 4 Forward
 6:15 P.M. & 8:30 P.M.

Assistance available at the entrance to the Walt Disney Theatre 30 minutes prior to show time.

7:45 - 8:05 p.m.
Deck Stage, Deck 11, Midship marks the spot
 It's a Pirate Celebration, me hearties! Come experience all the pirate fun alongside Captain Mickey Mouse and his famous Pirate Crew. (Weather Permitting)

Buccaneer Blast Fireworks
 What's a pirate party without some fireworks to remind the other ships who be ruling the oceans blue?
10:30 p.m.
Decks 11 and 12, Midship mark the spot
 Fireworks will be on display Starboard side - seen best from Deck 11, center pool area, and on Deck 12.

Disney's Castaway Cay

Reserved exclusively for Guests on Disney Cruise Line Bahamian and Caribbean cruise vacations, Castaway Cay is Disney's private port-of-call paradise. On this island, enjoy tropical leisure activities, such as snorkeling, boating, swimming and sunbathing.

Friendly Reminders

- Serenity Bay is reserved for Guests 18 and older.
- Your Key To The World Card will need to be used for all transactions on Disney's Castaway Cay except for the Post Office.
- A limited number of all-terrain wheelchairs are available across from Scuttle's Cove.
- For your convenience, beach towels are available as you leave the ship; please return them at the gangway at the end of your day.
- Due to our commitment to the environment, we ask that seashells, coral and other natural treasures be left undisturbed at Disney's Castaway Cay for all to enjoy.

Did you know?

AquaDuck water coaster evolved from the idea of having a "lazy river" experience on the perimeter of the main "sundeck."

GAME SHOW
 Calling all Pirates, we be! If ye have an adventurous spirit or pirate savvy, come spin the "Wheel of Destiny", fer a treasure trove of fun be ripe for the takin' in this action packed pirate game show.
6:30 & 9:45 p.m.
D Lounge, Deck 4, Midship

Don't Miss:

- Run Disney: Castaway Cay 5K**
 Meet in 687 Pub (12+), Deck 4, Aft - 8:30 a.m.
 Runners meet in 687 Pub, Deck 4, Aft, at 8:30 a.m. We will depart the ship at 8:45 a.m., and make our way to the Bike Rentals where the run will begin.
- Crab Races**
 Castaway Cay, Gazebo 1, (Near Cookies BBQ) - 11:45 a.m.
 Castaway Cay, Gazebo 2, (Near Pelican Point Tram Stop) - 12:45 p.m.
 Watch some local sea creatures make a break for the finish line.
- Pirate Trivia**
 District Lounge, Deck 4, Aft - 4:00 p.m.
 D Lounge, Deck 4, Midship - 9:15 p.m.
 Test your nautical knowledge with your Cruise Staff in this fun Pirate Trivia.
- Adult Crazy Karaoke**
 Evolution, Deck 4, Aft - 11:00 p.m.
 Take to the stage, grab a microphone and sing your favorite song with your Club Host, Max, and DJ Kurtis.



Sport's Simulators

Digital sports simulators are available at Goofy's Sports Deck on Deck 13, Aft. This state-of-the-art virtual sports experience includes golf, basketball, baseball, hockey and soccer. Book now at the Port Adventures Desk, Deck 5, Midship.

DINNER MENU

Animator's Palate: Pirate's Menu
 Enchanted Garden: Pirate's Menu
 Royal Palace: Pirate's Menu

DRINK OF THE DAY

Bahama Mama (Alcoholic)
 Coco Bali (Non Alcoholic)

IMPORTANT NUMBERS

Fire/Security: 7-3001
 Medical Emergency: 7-3000
 Health Center: 7-1923

FAMILY ACTIVITY HIGHLIGHTS

RUN DISNEY: CASTAWAY CAY 5K

Meet in 687 Pub (12+), Deck 4, Aft - 8:30 a.m.

Runners meet in 687 Pub, Deck 4, Aft, at 8:30 a.m. We will depart the ship at 8:45 a.m., and make our way to the Bike Rentals where the run will begin. Come cheer on your friends and family as they cross the finish line!

ISLAND POWER WALK

Meet at the Post Office, Castaway Cay - 9:30 a.m.

Join your Cruise Staff for a brisk walk around the island. Meet outside, by the Post Office. Meet time is 9:30 a.m. Walk leaves promptly at 9:45 a.m.

CRAB RACES

Castaway Cay, Gazebo 1, (Near Cookies BBQ)- 11:45 a.m.

Castaway Cay, Gazebo 2, (Near Pelican Point Tram Stop)- 12:45 p.m.

Watch some local sea creatures make a break for the finish line.

BASKETBALL FREE THROW

In Da Shade Games, Castaway Cay - 12:00 p.m.

Join your Cruise Staff in this fun tournament and see how many you can sink in 30 seconds!

FAMILY WHALE DIG

Monstro Point, Castaway Cay - 1:00 p.m.

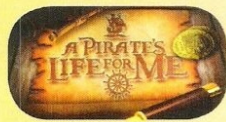
Our island paleontologist leads us in the excavation of a giant whale skeleton and other fossilized treasures!

PIRATE TRIVIA

District Lounge, Deck 4, Aft - 4:00 p.m.

D Lounge, Deck 4, Midship - 9:15 p.m.

Test your nautical knowledge with your Cruise Staff in this fun Pirate Trivia.



A PIRATE'S LIFE FOR ME

D Lounge, Deck 4, Midship - 6:30 & 9:45 p.m.

Calling all Pirates, we be! If ye have an adventurous spirit or pirate savvy, come spin the "Wheel of Destiny", for a treasure trove of fun be ripe for the takin' in this action packed pirate game show.



ADULT ACTIVITY HIGHLIGHTS

SENSES SPA SEMINARS

Body Sculpt Boot Camp (Fee Applies) - Basketball Court, 7:30 a.m.

Wake Up & Stretch - Senses Fitness Center, 8:00 a.m.

Fitness Frenzy - Basketball Court, 10:00 a.m.

Yoga on the Beach - Serenity Bay, 10:30 a.m.

Burn Fat Faster - Senses Spa & Salon, 3:00 p.m.

Seminar: Introduction to Acupuncture - Senses Spa & Salon, 4:00 p.m.

Group Cycling - Senses Fitness Center, 4:00 p.m.



BEVERAGE SEMINARS

Beer Tasting - 687 Pub, 4:00 p.m.

Please make reservations for tasting at Guest Services for a nominal fee. Beverage seminars are only for Guests 21 and over.

BASKETBALL CHALLENGE

In Da Shade Games, Castaway Cay, 1:00 p.m.

CLUB
18*21

X-BOX CHALLENGE

687 Pub, Deck 4, Aft - 4:30 p.m.

MIXER

Currents, Deck 13, Forward - 10:00 p.m.

ART OF THE THEME SHOW TOUR

Meet at Meridian, Deck 12, Aft - 2:30 p.m.

Join us on a guided ship tour and discover the key ingredients that make the Disney Dream cruise ship one-of-a-kind.

DISNEY VACATION CLUB® GROUP PRESENTATION

Evolution, Deck 4, Aft - 4:30 p.m.

Want to learn more about taking magical vacations year after year? Stop by our interactive group presentation to find out more information from a Disney Vacation Club representative.



ESPN DREAM TEAM DRAFT DAY

687 Pub, Deck 4, Aft - 5:00 p.m.

Play ball! Join the "Commissioner" and engage in this interactive fantasy baseball draft unlike anything you've ever seen!

ADULT KRAZY KARAOKE

Evolution, Deck 4, Aft - 11:00 p.m.

Take to the stage, grab a microphone and sing your favorite song with your Club Host, Max, and DJ Kurtis.

BINGO

DOUBLE-UP JACKPOT BINGO

Don't miss our 4 cash prize games and your chance to win some Pirate treasure! Great DCL raffles prizes are also up for grabs plus your chance to win the Jackpot money early!

All electronic chances are doubled tonight!

**D Lounge
Deck 4, Midship**

Pre Sales - 4:00 p.m.

Game Starts - 4:15 p.m.

YOUTH ACTIVITIES HIGHLIGHTS

DINE & PLAY

A convenience for families dining at 8:15 p.m., our Youth Activities Counselors will be available at 9:15 p.m. at the entrance of Royal Palace, Enchanted Garden and Animator's Palate dining rooms to bring registered children to join the fun in the Youth Activity areas.



Deck 5 Midship (7-1440) 4:00 p.m. - 12:00 Mid.
(3 - 12 years old)

ONCE UPON A TIME

5:00 p.m.

Join Beverly the Bookmaker for a magical, musical story time featuring a Disney Princess!

SO YOU WANT TO BE A PIRATE?

6:15 p.m. & 8:30 p.m.

Have you learned about life on the high seas? Do you have what it takes to be a pirate? Join Captain Hook and his friends to find out!



Deck 5 Midship (7-1445) 4:00 p.m. - 1:00 a.m.
(3 - 12 years old)

GET THE HOOK

8:30 p.m.

A villainous villain has stolen Captain Hook's prized golden hook. Become a member of the Top Deck Detective Agency and help solve the clue's to retrieve Hook's hook.

SUPER SLOPPY SCIENCE

10:30 p.m.

Join Professor Make-O-Mess in some of the most extreme experiments you will ever see in the world of Super Sloppy Science!



Deck 13 Midship (41-14426) 4:00 p.m. - 1:00 a.m.
(11 - 14 years old)

GENDER WARS

9:00 p.m.

Join your Edge counselors as we see who reigns supreme in the ultimate battle of the sexes.

SO YOU WANT TO BE A PIRATE?

11:45 p.m.

Have you learned about life on the high seas? Do you have what it takes to be a pirate? Join Captain Hook and his friends to find out!



Entrance on Deck 4 Forward (7-9418)
4:00 p.m. - 2:00 a.m.
(14 - 17 years old)

PUMP IT UP

9:00 p.m.

Join us for an exclusive teen only workout in the Senses Fitness Center! Pump It Up is offered daily from 9:00 p.m. - 11:00 p.m.. Please check in at Vibe if you would like to attend!

DANCE PARTY

12:30 a.m.

Join your Vibe counselors tonight and dance along to your favorite songs!

MICKEY'S PIRATES



in the CARIBBEAN

7:45 - 8:05 p.m.

Pirate Games start at 7:30 p.m.
Deck Stage, Deck 11, Midship

It's a Pirate Celebration, me hearties!
Come experience all the pirate fun alongside Captain Mickey Mouse and his famous Pirate Crew.
(Weather Permitting)



Buccaneer Blast Fireworks

What's a pirate party without some fireworks to remind the other ships who be ruling the oceans blue?

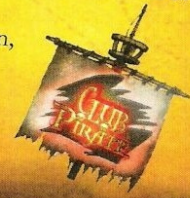
10:30 p.m.

Decks 11 & 12, Midship
mark the spot

Fireworks will be on display Starboard side
Seen best from Deck 11, center pool area, and on Deck 12.

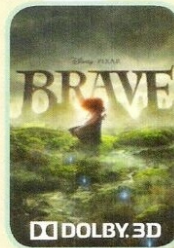
Club Pirate

If ye be a fan of Pirates of the Caribbean, tis time to revel in the night at the hottest dance club in all the seven seas with Guest DJ Ryan Marx
(Immediately following Buccaneer Blast)

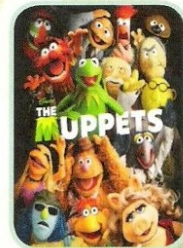


BUENA VISTA THEATRE

Today's Movies



8:30 a.m. & 3:00 p.m.
Run Time: 1 hr 31 min
Rating: PG



10:30 a.m. - **PG**
Run Time: 1 hr 43 min
Rating: PG



12:45 p.m.,
5:30 & 8:30 p.m.
Run Time: 1 hr 40 min
Rating: PG



11:00 p.m.
Run Time: 2 hr 26 min
Rating: PG-13

MORE TO ENJOY WHILE ONBOARD

EXPRESS WALK-OFF

Guests now have the option to take your luggage off the ship at your leisure once the ship has been cleared by the local authorities. You do not need to wait for your luggage to enter the terminal and there is no need to claim it inside the terminal building. Please note that no assistance with luggage is provided for this option.

DISNEY VACATION CLUB® GROUP PREVIEW

Want to learn more about taking magical vacations year after year? Please see a Disney Vacation Club representative on Deck 4, Midship, or call 7-2805 from your stateroom phone for more information about our interactive group presentation.

PROTECT YOUR PURCHASES

Don't forget to activate your 60 day buyer's guarantee form for your purchases in Nassau. It's free and confidential. Pick one up at the Shopping Desk, Deck 4, Midship.



SALON TASTER SPECIAL

Choose from scalp massage, European facial, hand treatment, sunglow make-over, hair treatment, eye-collagen treatment, foot & ankle massage and neck & shoulder massage.

Three for \$99, five for \$119, and eight for \$139.

STYLISH JEWELRY ON THE DREAM

Express your personal style on the Disney Dream with jewelry from some of the best names. Try on beautiful necklaces from Joia De Majorca. Attract everyone's attention with accessories from Chamilia. Dress up in crystals with jewelry from Swarovski. Redefine cruise line style and make it your own.

WHITECAPS
Deck 3, Forward

Shutters PROFESSIONAL PORTRAITS

Lobby Atrium, Deck 3, Midship

Lifestyle & Ships Bow – Six Guests maximum
5:15 p.m. – 6:00 p.m., 7:15 p.m. – 8:30 p.m. & 9:30 p.m. – 10:30 p.m.

Grand Staircase – Groups accommodated
7:15 p.m. – 8:30 p.m.

*Please note that photos are available for viewing on our interactive photo kiosks approximately three hours after being taken and are only available for purchase during this cruise.



Welcome to Disney's Island Paradise Castaway Cay. Today is the day to relax in an inner tube, snorkel in the Caribbean blue, get up-close and personal to real life stingrays or fly high in the sky on a parasail excursion during a breathtaking aerial adventure.

Visit Marge's Barges or one of the rental locations and our friendly team will assist in making any last minute bookings.

PORT ADVENTURES MEETING TIMES AND LOCATIONS

As per ticket	Castaway Ray's Stingray Adventure	Gil's Fins and Boats
As per ticket	Glass Bottom Boat	Marge's Barges
As per ticket	Castaway Cay Bottom Fishing	Marge's Barges
As per ticket	Nature Walk and Kayaking	Marge's Barges
As per ticket	Parasailing	Marge's Barges
9:00 a.m.	Teen Wild Side	Vibe
As per ticket	Single & Double Watercraft	Boat Beach

CASTAWAY CAY ISLAND RENTALS

Bicycles	9:00 a.m. - 4:00 p.m.	Bike Rentals
Boats	9:00 a.m. - 4:00 p.m.	Boat Beach
Snorkeling Gear	9:00 a.m. - 3:30 p.m.	Gil's Fins and Boats / Flippers and Floats
Float	9:00 a.m. - 3:30 p.m.	Gil's Fins and Boats / Flippers and Floats
Getaway Package	9:00 a.m. - 3:30 p.m.	Gil's Fins and Boats / Flippers and Floats

Reservations can be made on the island at each rental location. Castaway Ray's walk up reservations can be made at Gil's Fins and Boats on Family Beach.

SHOPPING

CASTAWAY CAY TREASURES

Take home memories of your magical experiences at our island paradise, Disney's Castaway Cay. She Sells... and Everything Else & Buy the Seashore are your island memory destinations where you can find everything from apparel to plush to postcards to swimwear and, well, everything else!

CELEBRATE YOUR SUCCESS!

Doing the 5K run today? Celebrate your success with the Castaway-exclusive 5K t-shirt. Let your achievement live on well after your cruise has finished. Exclusively at Buy the Seashore.

CALLING ALL PIRATES "THERE'S TREASURE TO BE HAD!"

Arghh Mateys! Plunder and pillage with pirate swords and eye patches, and dress the part in your own pirate costume. All supplies for your adventure can be found at Mickey's Mainsail, Deck 3, Midship and Quacks Port Side, Deck 11, Midship.

A PICTURE PAINTS A THOUSAND WORDS!

Re-live your cruise experience for years to come with a piece of exclusive Disney Cruise Line art. Discounted shipping available on two or more pieces of art. Place a bid on our silent auction pieces as well, bidding closes at 6 pm tomorrow. Vista Gallery, Deck 4, Midship.

TAX AND DUTY FREE

Tax and duty free shopping right here onboard! A great range of jewelry, fragrances, and liquor at competitive prices. Buy onboard and we will package it safely for your journey home. Whitecaps, Deck 3, Forward.

Due to port regulations, when the ship is docked, the stores will remain closed.

IMPORTANT INFORMATION

Security Notice

All Guests (including children) who wish to disembark the ship are required to present their Key to the World card at the gangway. A photo ID is also required for those Guests who are 18 years of age or older. Guests under the age of 18 are required to have a Parent, Guardian or other responsible adult sign an authorization form at the time it is given out if they wish to go ashore unaccompanied. Authorization forms are available at the gangways and Guest Services.

Please Note:

Please remember to use plenty of sunscreen and mosquito repellent when venturing ashore.

Cold and Flu Reminder

Please wash hands frequently and thoroughly, particularly before meals. Contact the Health Center by dialing 7-1923, should anyone in your party become ill.

Corridor Quiet Hours

As a courtesy to all our Guests, please recognize quiet hallway hours from 10:00 p.m. til 8:00 a.m.

Inclement Weather

For the safety of all Guests, outdoor events may be changed due to unforeseen weather conditions.

Environmental Message

With Disney's commitment to the Environment, please refrain from throwing anything over the Ship's side. Thank you!

No Reserved Seats Policy

As a courtesy to all our Guests, we kindly advise that the saving of seats is not permitted in the Walt Disney Theatre, and the saving of the sun loungers is not permitted on Deck 11, 12, and 13. Items left unattended will be returned to lost and found at Guest Services, Deck 3 Midship.

Smoking

For the comfort of our guests the following areas are designated as Smoking areas:
-Deck 13, Forward, port side, by "Currents"
-Deck 12, Aft, port side outdoor area that is accessible through the Meridian Lounge
-Deck 4, Aft, port side from 6:00 p.m. to 6:00 a.m. only (all of Deck 4 is no smoking from 6:00 a.m. to 6:00 p.m.)
-Smoking is permitted on stateroom verandahs. Smoking is prohibited inside all guest staterooms. Guests found smoking in their staterooms will be charged a \$250 stateroom recovery fee.

Walt Disney Theatre

Theatrical performances may use artificial fog, strobe lights, pyrotechnics and other special effects. For the safety of our performers and the comfort of those around you, the use of any photography, video recording device or any electronic equipment is prohibited.

Verandah Safety

Please do not leave any combustible materials on your balcony when not present in your stateroom for safety reasons.

DD/CL/4D/155/09.02.12/RB/©DISNEY

Morning	8:30	8:45	9:00	9:15	9:30	9:45	10:00	10:15	10:30	10:45	11:00	11:15	11:30	11:45	12:00	12:15	12:30	12:45	1:00	1:15	1:30			
FUNNELVISION	Bolt (G) FunnelVision						Mary Poppins (G) FunnelVision																	
MOVIES	Brave (PG) DOLBY 3D Buena Vista Theatre						The Muppets (PG) DOLBY 3D Buena Vista Theatre																	
CHARACTER	Jack Sparrow Island Pathway		Mickey Scuttles	Daisy Gangway	Minnie Scuttles	Hook & Smee Post Office	Mickey Rustmore	Daisy Gangway	Goofy Scuttles	Character Dance Party Island Gazebo 1														
FUN FOR ALL AGES	Run Disney: Castaway Cay 5K Meet at 687 (Departs at 8:45 a.m.)				Island Power Walk/Stroller Fitness Meet at the Post Office at 9:30 a.m. Departs at 9:45 a.m.				Crab Races Gazebo 1				Basketball Free Throw In Da Shade Games				Crab Races Gazebo 2				DJ Kurtis Gazebo 1			
ADULTS	Friends of Bill W. Outlook		Rise & Shine Club Cove Cafe		Fitness Frenzy Meet in Senses Spa		Yoga on the Beach Serenity Bay		Club 18*21 Volleyball Sports Beach		Basketball Free Throw In Da Shade Games				18*21 Basketball In Da Shade Games				Two for One Mojitos Heads Up Bar					
VIBE	Meet for Wildside at Vibe				Teen Hideout Opens				Volley Ball				Lunch Cookies Too				In Da Shade Games							
EDGE	Water Relays				Sand Soccer				Basketball Runway				Lunch Cookies Too				In Da Shade Games							
SCUTTLES COVE	Soccer				Sebastian Sea Search				Treasure Hunt				Lunch				Sand Castle Competition							
OCEANEER LAB	Youth Activities Open House																							
OCEANEER CLUB																								

Afternoon	1:45	2:00	2:15	2:30	2:45	3:00	3:15	3:30	3:45	4:00	4:15	4:30	4:45	5:00	5:15	5:30	5:45	6:00	6:15	6:30	6:45
FUNNELVISION	Aladdin (G) FunnelVision						Jungle Book (G) FunnelVision														
MOVIES	Brave (PG) DOLBY 3D Buena Vista Theatre						The Odd Life of Timothy Green (PG) Buena Vista Theatre														
CHARACTER	Pluto Gangway		Mickey Deck 4, Balcony		Disney Friends Atrium		Captain Hook Gangway		Peter Pan Preludes		Minnie Dk 4, Balcony		Mickey Atrium		Minnie Dk 4, Balcony		Hook & Smee Preludes		Jack Sparrow D Lounge		
FUN FOR ALL AGES	Sports Simulator Available for Bookings Sports Deck				Youth Activities Open House Edge				Bingo Pre Sales (Starts at 3:30 p.m.)		Double-Up Jackpot BINGO D Lounge		Ping Pong Goofy's Sports Deck				A Pirate's Life for Me D Lounge				
ADULTS	Art of the Theme Show Tour Meet at Meridian				Making of the Dream Evolution				Beer Tasting (21+) 687 Pub (Pre Book/Nom Fee)		18*21 X-Box Challenge 687 Pub		ESPN Dream Team Draft Day 687 Pub		Live Piano District Lounge						
VIBE	Tether Ball				Youth Activities Open House				A-Z Scavenger Hunt												
EDGE	In Da Shade Games				Tween Pool Party in Vibe				Green Screen Experience				A-Z Scavenger Hunt								
SCUTTLES COVE	Caribbean Beach Party				Capture the Flag																
OCEANEER LAB	Youth Activities Open House				POTC: Tides of Fortune				Adventure Squad				Dinner				A Pirate's Life for Me				
OCEANEER CLUB	Open for Secured Programming				Once Upon a Time				Dinner				So You Want To Be A Pirate?								

Evening	7:00	7:15	7:30	7:45	8:00	8:15	8:30	8:45	9:00	9:15	9:30	9:45	10:00	10:15	10:30	10:45	11:00	11:15	11:30	11:45	12:00	
FUNNELVISION	Mickey's Pirates				Muppet Treasure Island (G) FunnelVision																	
MOVIES	The Odd Life of Timothy Green (PG) Buena Vista Theatre				The Avengers (PG-13) 2D Version Buena Vista Theatre																	
CHARACTER	Jack Sparrow D Lounge		Mickey's Pirates Deck Stage, Deck 11, Midship		Mickey Atrium		Tinker Bell Atrium		Donald Dk 4, Balcony		Hook & Smee Preludes		Buccaneer Blast & Club Pirate									
FUN FOR ALL AGES	Pirate Games Deck Stage, Deck 11, Midship		MOONING PIRATES Deck Stage, Deck 11, Midship		THE PHYSICAL COMEDY OF MAX WINFREY Walt Disney Theatre				A PIRATE'S LIFE FOR ME D Lounge		Buccaneer Blast Fireworks followed by Club Pirate				Deck Stage, Deck 11, Midship							
ADULTS	MLB: New York Yankees vs. Tampa Bay Rays 687 Pub (Subject to blackouts & satellite reception)				Whiskey Tasting (21+) Meridian (Pre Book/Nom Fee)				Club 18*21 Mixer Currents				Adult Crazy Karaoke Evolution									
VIBE	Smoothie Time				Pump it Up				Fireworks				Gender Wars									
EDGE	Ship Factor				Gender Wars				Fireworks				Club Pirate				A Pirate's Life for Me					
OCEANEER LAB	Anyone Can Cook				Get The Hook				Magic Playfloor				Super Sloppy Science				Magic Playfloor					
OCEANEER CLUB	Magic Playfloor				So You Want To Be A Pirate?				Memory Wall				Pluto's PJ Party				Youth Activities Open House "Magic Playfloor" 11:00 p.m. - 11:30 p.m.					

Symbol for activities that will be repeated during the cruise

FOLD

Fold along the dotted lines and take me with you so you don't miss any of the fun!

FOLD

IN THE SPOTLIGHT SERIES

SOLVE IT! SERIES

JUMP UP! SERIES

CREATE & INVENT SERIES

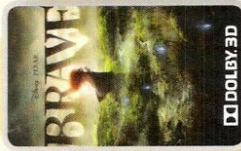
OPEN HOUSE

CLUBHOUSE SERIES

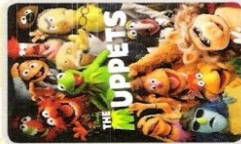
STORYBOOK SERIES

TUESDAY, SEPTEMBER 4, 2012 - CASTAWAY CAY

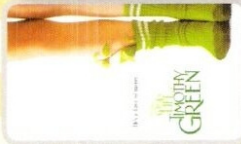
BUENA VISTA THEATRE



BRAVE
8:30 a.m. & 3:00 p.m.
Run Time: 1 hr 31 min
Rating: PG



THE MUPPETS
10:30 a.m. - on
Run Time: 1 hr 43 min
Rating: PG-13



THE MONUMENTS MEN
12:45, 5:30 & 8:30 p.m.
Run Time: 1 hr 40 min
Rating: PG



THE AVENGERS
11:00 p.m.
Run Time: 2 hr 26 min
Rating: PG-13

Character Appearances

JACK SPARROW

Island Pathway - 9:00 a.m.
Pelican Point - 10:15 a.m.

TINKER BELL

Lobby Atrium - 9:00 a.m.

HOOK & SMEE

Post Office
9:00 a.m. & 10:00 a.m.

DONALD DUCK

Gangway
9:00 a.m. & 10:00 a.m.
Deck 4, Balcony - 10:00 p.m.

MICKEY MOUSE

Scuttle's Cove - 9:15 a.m.
Mt. Rustmore - 10:15 a.m.
Deck 4, Balcony - 3:15 p.m.
Lobby Atrium
5:00 p.m. & 9:30 p.m.

PLUTO

Mt. Rustmore - 9:15 a.m.
Scuttle's Cove - 10:15 a.m.
Gangway - 2:45 p.m.

DAISY DUCK

Gangway
9:30 a.m. & 10:30 a.m.
Deck 4, Balcony - 9:30 p.m.

LILO & STITCH

Post Office
9:30 a.m. & 10:30 a.m.

JACK SPARROW

D Lounge - 5:30 & 7:30 p.m.

CHARACTER APPEARANCES

Don't forget your Camera to capture those Magical Moments!
For details of daily Disney character appearances, refer to the character line in your Navigator: Grid.

YOUTH ACTIVITIES THEMED EXPERIENCES

CLUBHOUSE SERIES
focuses on movement and features content which appeals to younger children.

STORYBOOK SERIES
is designed with a strong connection to the Disney classic stories.

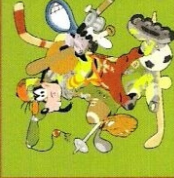
WUMP UP! SERIES
includes large ground games & movement-oriented activities.

CREATE & INVENT SERIES
will have a tactile focus allowing children to create and admire their work.

IN THE SPOTLIGHT SERIES
focuses on children's stage presence with lots of activities and enthusiasm.

SOLVE IT! SERIES
are less active, but will challenge children with problem/solutions based activities.

OPEN HOUSE
activities for families, adults and children of all ages to enjoy together.



GOOFY'S SPORTS
Digital Simulators
Sports Simulator
(Basketball, Baseball, Hockey, or Soccer) \$25 / half hr, \$45 / hr
\$12 / half hr, \$20 / hr
Reservations can be made at the Port Adventures Desk, Deck 5, Midebbip or at the Simulators, Deck 13, Aft

SHIP DIRECTORY

YOUTH ACTIVITIES

DISNEY'S OCEANEER CLUB DECK 5, Mid 4:00 P.M. - 12:00 MID.
DISNEY'S OCEANEER LAB DECK 5, Mid 4:00 P.M. - 1:00 A.M.
EDGE DECK 13, Mid 4:00 P.M. - 1:00 A.M.
VIBE DECK 4, Fwd 4:00 P.M. - 2:00 A.M.
IT'S A SMALL WORLD NURSERY DECK 5, Mid 9:00 A.M. - 1:00 A.M.

RECREATION

AQUADUCK DECK 12, Mid 9:00 A.M. - 8:30 P.M.
11:00 P.M. - 12:00 MID.
BASKETBALL COURT DECK 13, Aft 12:00 A.M. - 6:00 P.M.
DONALD'S POOL DECK 11, Mid 6:00 A.M. - 5:00 P.M.
GOLF/SPORTS SIMULATOR DECK 13, Aft 9:00 A.M. - 6:00 P.M.
GOOFY & MAX'S MINI GOLF DECK 13, Aft 8:00 A.M. - 8:30 P.M.
GOOFY'S SPORTS DECK DECK 12, Aft 12:00 A.M. - 6:00 P.M.
MARGE'S BARGES CASTAWAY CAY 9:00 A.M. - 3:30 P.M.
GOOFY & MAX'S MINI GOLF DECK 11, Mid 8:00 A.M. - 8:30 P.M.
MICKY'S POOL DECK 5, Mid 6:00 A.M. - 5:00 P.M.
MIDSHIP DETECTIVE AGENCY DECK 11, Mid 8:00 A.M. - 11:00 P.M.
NEMO'S REEF DECK 11, Mid 10:00 A.M. - 7:00 P.M.
QUIET COVE POOL DECK 11, Fwd 6:00 A.M. - 12:00 MID.
SENSES FITNESS CENTER DECK 11, Fwd 6:00 A.M. - 10:00 P.M.

GENERAL INFORMATION

ARR-CADE DECK 11, Aft 24 HOURS
DISNEY VACATION CLUB DECK 4, Mid 5:30 P.M. - 10:00 P.M.
FUTURE CRUISE SALES DESK DECK 4, Mid 8:00 A.M. - 10:00 A.M.
3:00 P.M. - 10:00 P.M.
GUEST SERVICES DECK 3, Mid 24 HOURS
HAIR BRAIDING DECK 11, Mid 5:30 P.M. - 10:00 P.M.
MEDICAL HEALTH CENTER DECK 1, Fwd 9:30 A.M. - 11:00 A.M.
4:30 P.M. - 7:00 P.M.
PORT & SHOPPING DESK DECK 4, Mid 9:00 P.M. - 10:00 P.M.
PRELUDES DECK 3, Fwd 5:45 P.M. - 6:30 P.M.
8:00 P.M. - 8:45 P.M.
SENSES SPA AND SALON DECK 11, Fwd 8:00 A.M. - 10:00 P.M.
SHUTTERS PHOTO GALLERY DECK 4, Mid 5:00 P.M. - 11:00 P.M.

SHOPPING

MICKY'S MAINSAIL DECK 3, Fwd 5:30 P.M. - 11:00 P.M.
QUACKS (PORT SIDE) DECK 11, Mid 6:30 P.M. - 11:00 P.M.
SEA TREASURES DECK 3, Fwd 5:30 P.M. - 11:00 P.M.
VISTA GALLERY DECK 4, Mid 6:00 P.M. - 11:00 P.M.
WHITECAPS DECK 3, Fwd 5:30 P.M. - 11:00 P.M.
WHOZITS & WHAZITS DECK 11, Mid 6:30 P.M. - 11:00 P.M.

DUE TO PORT REGULATIONS, WHEN THE SHIP IS DOCKED, THE STORES MUST REMAIN CLOSED.

DINNER

Animator's Palate: Pirate's Menu
Enchanted Garden: Pirate's Menu
Royal Palace: Pirate's Menu
Dining Times: 5:45 p.m. & 8:15 p.m.

Evening Attire: Pirate/ Cruise Casual

DINING & LOUNGES

BREAKFAST

CABANAS CONTINENTAL (PORT SIDE) DECK 11, Aft 7:00 A.M. - 7:30 A.M.
CABANAS DECK 11, Aft 7:30 A.M. - 10:45 A.M.
ENCHANTED GARDEN DECK 2, Mid 8:00 A.M. - 10:00 A.M.
ROYAL PALACE DECK 3, Mid 8:00 A.M. - 9:30 A.M.

LUNCH

CABANAS DECK 11, Aft 12:00 P.M. - 1:30 P.M.
COOKIES BBQ CASTAWAY CAY 11:30 A.M. - 2:00 P.M.
COOKIES BBQ TOO CASTAWAY CAY 11:30 A.M. - 2:00 P.M.
FILLMORE'S FAVORITES DECK 11, Mid 11:00 A.M. - 6:00 P.M.
LUIGI'S PIZZA DECK 11, Mid 11:00 A.M. - 6:00 P.M.
TOW MATER'S GRILL DECK 11, Mid 11:00 A.M. - 6:00 P.M.

DINNER

ANIMATOR'S PALATE DECK 3, Aft 5:45 P.M. & 8:15 P.M.
ENCHANTED GARDEN DECK 2, Mid 5:45 P.M. & 8:15 P.M.
ROYAL PALACE DECK 3, Mid 5:45 P.M. & 8:15 P.M.
PALO & REWY (18+) DECK 12, Aft 6:00 P.M. - 9:00 P.M.
(RESERVATION REQUIRED & COVER CHARGE APPLICABLE. DIAL #7-9734)
TOW MATER'S GRILL DECK 11, Mid 6:00 P.M. - 11:00 P.M.

LATE NIGHT SNACKS

CABANAS - PIZZERIA DECK 11, Aft 10:30 P.M. - 11:15 P.M.
LUIGI'S PIZZERIA DECK 11, Mid 9:30 P.M. - 12:00 MID.

ADDED FEATURES

BEVERAGE STATION DECK 11, Aft 24 HOURS
EYE SCREAM DECK 11, Mid 11:00 A.M. - 11:00 P.M.
ROOM SERVICE DIAL 0 CLOSING AT 1:30 A.M.

ENTERTAINMENT - LOUNGES - BARS

Adults must be 21 and older to consume alcoholic beverages.

687 PUB DECK 4, Aft 5:00 P.M. - 9:00 P.M.
687 PUB (18+) DECK 4, Aft 9:00 P.M. - 12:30 A.M.
BON VOYAGE DECK 3, Mid 3:00 P.M. - 11:00 P.M.
COVE BAR (18+) DECK 11, Fwd 11:00 A.M. - 10:00 P.M.
COVE CAFE (18+) DECK 11, Fwd 7:00 A.M. - 6:00 P.M.
COVE CAFE WINE BAR (18+) DECK 11, Fwd 6:00 P.M. - 12:00 MID.
CURRENTS DECK 13, Fwd 2:00 P.M. - 12:00 MID.
D LOUNGE DECK 4, Mid SHOWTIMES
DISTRICT LOUNGE DECK 4, Aft 4:30 P.M. - 9:00 P.M.
DISTRICT LOUNGE (18+) DECK 4, Aft 9:00 P.M. - 12:00 MID.
EVOLUTION (18+) DECK 4, Aft 10:00 P.M. - 2:00 A.M.
FROZONE TREATS DECK 11, Mid 11:00 A.M. - 11:00 P.M.
MERIDIAN (18+) DECK 12, Aft 5:00 P.M. - 12:30 A.M.
OUTLOOK DECK 14, Mid SUNSET TIMES
PINK DECK 4, Aft 5:00 P.M. - 12:30 A.M.
SKYLINE (18+) DECK 4, Aft 5:00 P.M. - 12:30 A.M.
VISTA CAFE DECK 4, Mid 7:30 A.M. - 11:00 P.M.
WAVES DECK 12, Aft 3:00 P.M. - 7:00 P.M.

CASTAWAY CAY BARS

CONCHED OUT BAR CASTAWAY CAY 9:30 A.M. - 4:00 P.M.
CASTAWAY AIR BAR CASTAWAY CAY 9:30 A.M. - 3:30 P.M.
HEADS UP BAR CASTAWAY CAY 10:00 A.M. - 3:30 P.M.
SAND BAR CASTAWAY CAY 10:30 A.M. - 3:30 P.M.

Consumers who order raw or partially cooked, ready-to-eat food of animal origin, are hereby informed that the food is not sufficiently cooked to ensure its safety.

IMPORTANT NUMBERS

Fire/Security: 7-3001
Medical EMERGENCY: 7-3000
Health Center: 7-1923

All Ashore:

Approx. 8:30 a.m.

All Aboard:

5:00 p.m.